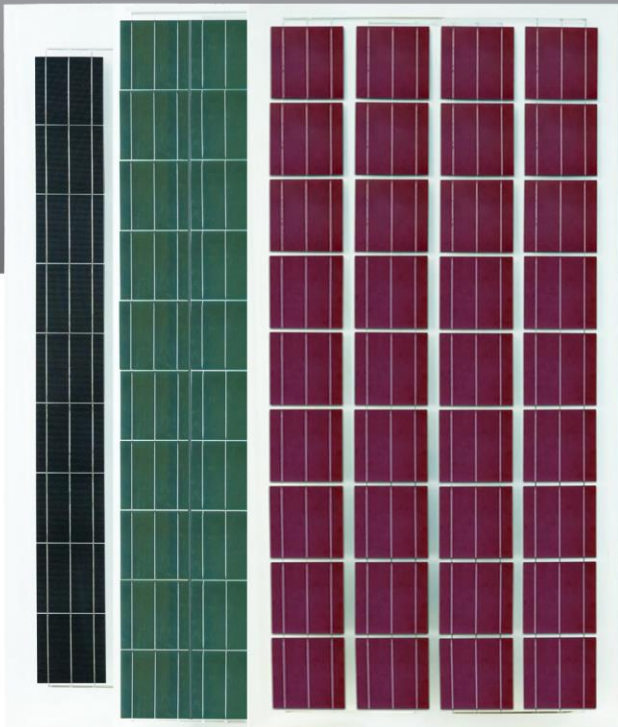




MADE IN EUROPE

12 YEARS QUALITY WARRANTY



AFP-60-260
250W-270 W



PID FREE

For Consistent Performance



El Tested

0% defects



+ < 5W

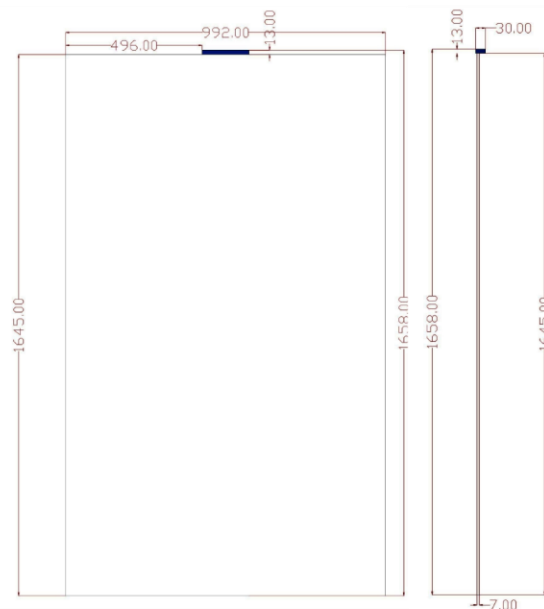
Positive Power Tolerance



Excellent Performance under low light

AFP - 60 - 260 SERIES / 250W -270W

ELECTRICAL Characteristics	Unit	AFP-250	AFP-260	AFP-270
Rated power at STC (P_{mp})	W	250	260	270
Power Tolerance	W	0 ~ 5W	0 ~ 5W	0 ~ 5W
Power Maximum at STC	W	254.99	264.99	274.99
Cell Efficiency (η_c)	%	17.8	18.1	18.4
Module Efficiency (η_m)	%	15.5	15.8	16.1
Open Circuit Voltage (V_{oc})	V	37.1	37.2	38.2
Short Circuit Current (I_{sc})	A	8.92	9.06	9.10
Maximum Power Voltage (V_{mp})	V	30.3	31.1	31.9
Maximum Power Current (I_{mp})	A	8.28	8.38	8.49
Maximum System Voltage	V	1000(TUV), 600(UL)		
Maximum Series Fuse Rating	A	15		



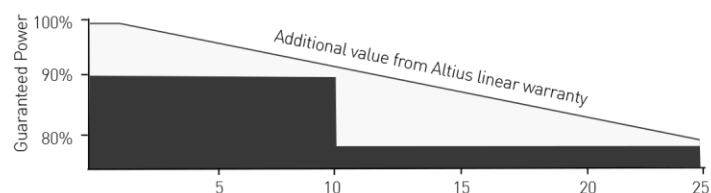
STC: Irradiance 1000W/m2, module temperature 25°C, AM=1.5;

Power measurement tolerance: +/-3%

Temperature Characteristics	
P_{max} Temperature Coefficient	-0.40% / °C
V_{oc} Temperature Coefficient	-0.33% / °C
I_{sc} Temperature Coefficient	+0.04% / °C
Operating Temperature	-40~+85°C
Nominal Operating Cell Temperature (NOCT)	45 ± 2°C

Performance Warranty

1 Year Output 97.5% 2-24 YEAR decrease < 0.7% 25 Years Output 80.7%



Container	20 ft	40 ft
Pieces per pallet	20	20
Pallets per container	12	28
Pieces per container	240	560

Mechanical Specifications

External Dimensions	1645 x 984 x 30mm
Weight	24.0kg
Solar Cells	Polycrystalline 156x156mm (60pcs)
Front glass	2.5mm tempered glass, low iron
Back glass	2.5mm tempered glass, low iron
Junction Box	IP67
Output Cables	4.0mm ² , symmetrical lengths 900mm
Connector	MC4
Maximum Snow Load	5400 Pa
Maximum Wind Load	2400 Pa

Current-Voltage & Power-Voltage Curve

